



# DAGGA



PORTABLE BLAST  
EQUIPMENTS

## DAGA PORTABLE BLAST EQUIPMENTS

All equipments are designed and manufactured under the requirements of pressure equipments 97/23/CE and subjected to conformity assessment procedures.

### CHARACTERISTICS:

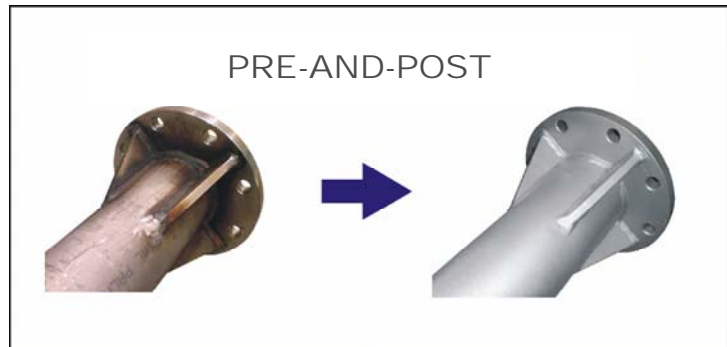
- Capacities from 60 to 400 litres.
- Light and flat design.
- Travel facilities for a single operator.
- Abrasive loading facilities on hollow bottom.
- Threaded coupling for easy attachment to any kind of silo.
- Safety valve.
- Pneumatic remote control system.
- Optional electric remote control system.



SAFETY VALVE

**OPERATION:**

The DG Shot blasting machine is a pressure vessel which is filled with a required abrasive, and then air pressure is introduced. Such pressure produces a constant abrasive flow and leaves the hose internal fluently and finally through the nozzle. Both the abrasive and air flow are projected on the surface that we will work on until getting the required finishing.



**ABRASIVE TYPES:**

The combination between the different abrasive types and their granulometries joint to pressure, air flow and output nozzles diameters allow us to cover a wide range of works to do and surfaces to deal with.

Those factors combination enables the achievement of several types of surface finishing, which can be adjusted to the customer specifications:

- Blast media
- Steel shot
- Copper slag
- Aluminium silicate
- Plant Abrasive
- Glass beads
- Ceramic bead
- etc...

**APPLICATIONS:**

The mill scale, oxide, paint, blacks welding points and any embedded material are removed with this sort of cleanliness. A surface treated with this method, presents a uniform colour, slightly rough that provides an excellent anchorage to the coatings. Primary paint should be applied before the environmental conditions attack to prepare surface. Applications are very different being the most common:

- Shop buildings.
- Steel and hall constructions.
- Off shore industry.
- Restoration.
- Refineries.
- Stones and masonry cleaning.
- etc...

Model	Capacity (L.)
DG-100	100
DG-200	200
DG-300	300

*Consult other capabilities.*

## SUPPLEMENTS AND AUXILIARY BLAST UNITS:

- Remote control valve .



- Deadman handle.



- Airline filter.



- Twinline hose.



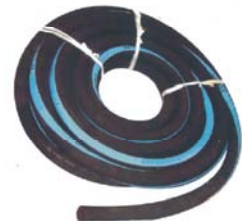
- Nozzles.



- CE approved blasting helmet.



- Abrasion resistance hose



- Pop up valves and gaskets.  
- Cast iron and nylon blast couplings.  
- Water ring device.  
- Protective equipments.  
- Etc.



**DAGA**



Tel: (+34) 976683070 Fax: (+34) 976683085  
www.grupodaga.com  
carlosaranda@grupodaga.com