



EQUIPMENTS FOR ENVIRONMENT

1.4 TRANSPORT AND COMPACTATION

Calle G, 27 - Polig. Ind. "Río Gállego"
50840 SAN MATEO DE GÁLLEGO (ZARAGOZA)
Tlf. (+34) 902 34 56 01 Fax. (+34) 902 34 56 05
e-mail: mares@grupodaga.com

www.grupodaga.com

General description

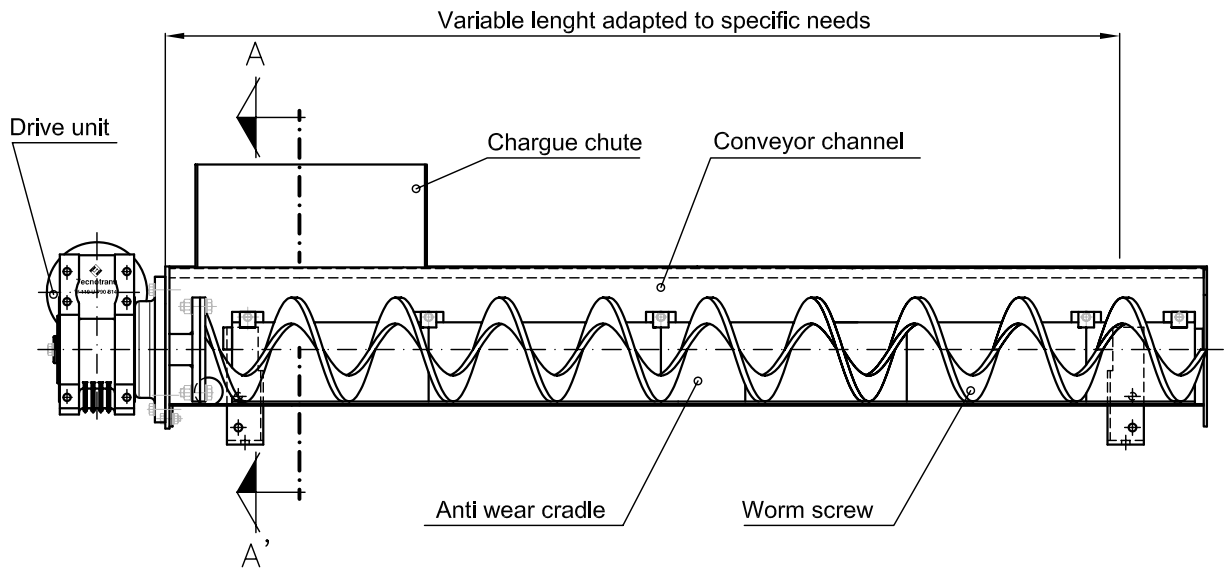
MR53T CONVEYOR SCREW. Specially designed unit for conveying solid waste from a waste water roughing operation (Gratings and Screens, etc).

Solids collected in the loading hopper, are conveyed via the worm screw to the discharging point.

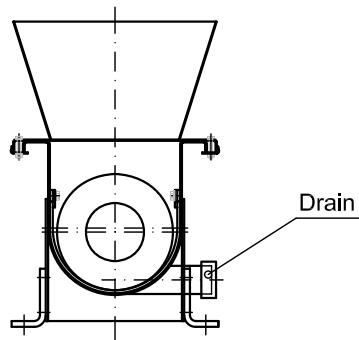
Descriptions and characteristics:

- **Conveying channel.** Made from stainless steel plating. The top part is closed off by screwed down covers which, when disassembled, make it easy to inspect and clean the unit. The anchor feet which incline the channel, are attached at the end thereof.
- **Worm screw.** This is a coreless conveyor screw, made from carbon steel or stainless steel. When it rotates, it bears on a cradle of anti-wear polyethylene.
- **Drive unit.** Consist of a motor reducer unit and a module for fastening to the worm gear.
- **Loading hopper.** Hopper through which the waste enters the feed screw, fastened by screws to the conveyor channel.

General view



SECTION " A-A' "





General Description

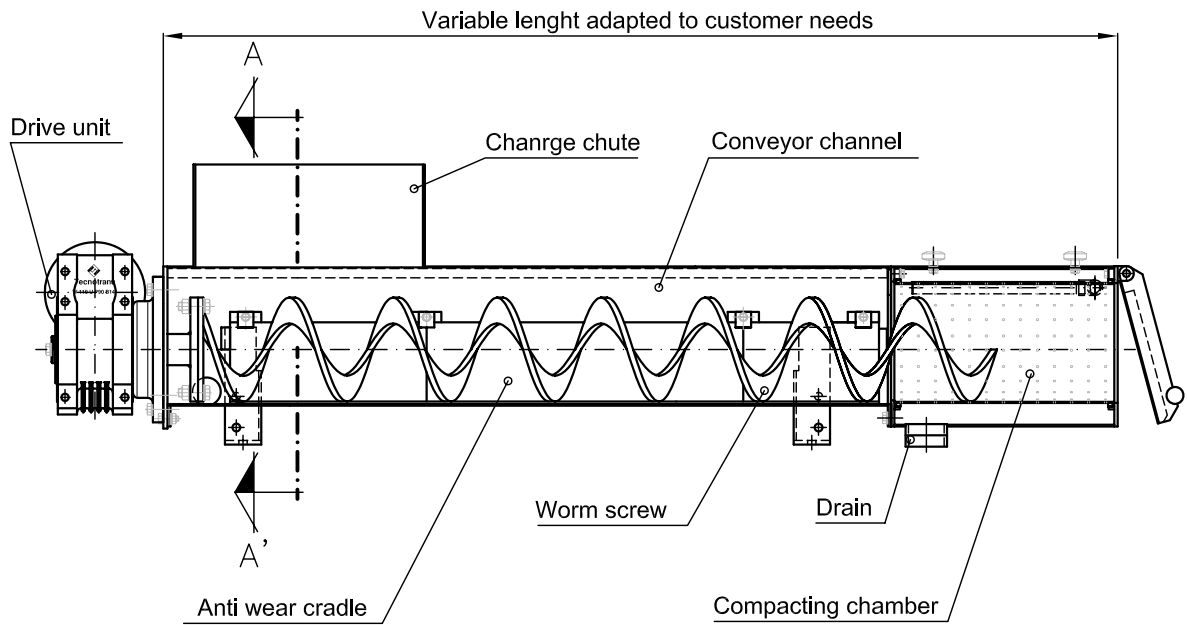
MR53C COMPACTING SCREW. Specially designed unit for conveying, compacting, dehydrating and reducing the volume of solid, wet waste from a waste water roughing operation (Gratings and Screens).

The collected waste is conveyed by a worm screw to a compacting and draining chamber. Here the contained water is separated and the solids undergo a continuous pressing operation, thanks to the action of the actual feed screw and a counterweighted hinged cover, which guarantees a certain level pressure. When this pressure is reached, the solids leave the compacting chamber.

Descriptions and characteristics:

- **Conveyor channel.** Made from stainless steel plating. The top part is closed off by screwed down covers which, when disassembled, make it easy to inspect and clean the unit. The anchor feet which incline the channel, are attached at the end thereof.
- **Worm screw.** This is a coreless conveyor screw, made from carbon steel or stainless steel. When it rotates, it bears on a cradle of anti-wear polyethylene.
- **Drive unit.** Consist of a motor reducer unit and a module for fastening to the worm gear.
- **Loading hopper.** Hopper through which the waste enters the feed screw, fastened by screws to the conveyor channel.
- **Compacting chamber.** This is located on the top of the screw and essentially consists of a high resistance filtering cylinder and a counterweighted discharge cover.

General view



SECTION " A-A' "

